

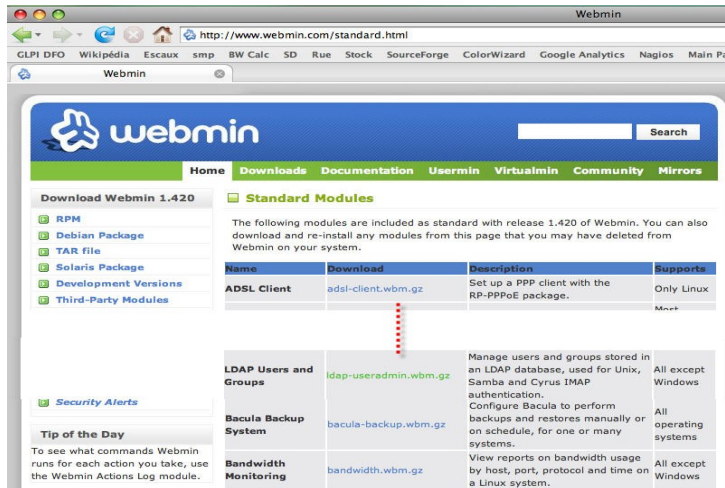
Managing LDAP Zarafa users with webmin

Install Zarafa with openldap with the corresponding doc on the subject from the download site :

<http://www.zarafa.com/download.html>
"Zarafa LDAP user interface manual"

Install webmin from <http://www.webmin.com/>

Download the ldap-useradmin from the standard modules section:



<http://download.webmin.com/download/modules/ldap-useradmin.wbm.gz>

Once installed and the module loaded from the webmin configuration section on your server, modify the file `/etc/webmin/ldap-useradmin/config`

```
[root@zal ~]# vi /etc/webmin/ldap-useradmin/config
```

Caution: If Wemin have not been started yet, you may have to chance the file

`/usr/libexec/webmin`

which contains the template of the config file used at webmin startup.

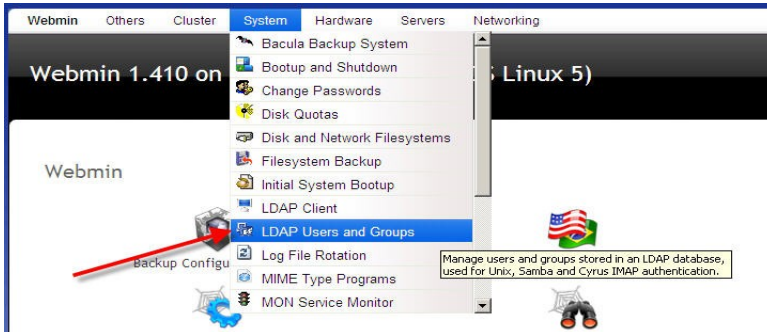
At the end of that file you have to specify which schema must be represented on the webmin screen.

Add/modify `other_class=zarafa-user qmailUser`

```
md5=4
other_class=zarafa-user qmailUser
samba_domain=S-1-5-21-1905058613-2972685632-209863213
fields=mail Email address <tab> mail\alternateaddress+ Email aliases<tab>zarafa\account Account type (1 = User, 0 = Resource)
ccount (0 = no, 1 = yes) zarafaadmin Zarafa administrator (0 = no, 1 = yes) ...
```

Add `fields=< ldap attribute > < space > < field label in webmin > < tab > < next ldap attribute > < space > ...`

Once done, restart webmin and you will see the entry "LDAP Users and Groups" in webmin menu:



If you click on "create LDAP user", you will see the effect of your settings in webmin

